

Welcome

We are a dynamic, high-performance company specializing in manufacturing top-quality contact elements, compounds, and assemblies for customers in the electronics, communications, and appliance industries.

Our Value:

Products

Electronic
Electrical
Lighting

INNOVATION

2D and 3D Design
CAD/CAM
Systems

Technology

Stamping with:
In-Die Welding
In-Die Tapping
In-Die Riveting

Our Service

- ✓ On Time Delivery
- ✓ Good Quality Products
- ✓ Satisfied Customer Service
- ✓ ISO 9001:2015
- ✓ ISO 14001:2015

www.patterer-thailand.com
info@patterer-thailand.com

Patterer Group

Mr. Hans Patterer founded the firm of Patterer GmbH on 19.01.1991 with its registered office at 87669 Rieden, Germany. He simultaneously took over the management and in the meantime can look back on 40 years of professional experience as a manager in both the technical and also the commercial field.

Patterer GmbH engages in the production of electrical and electronic components including tool design and construction. In addition, precision contact parts are produced according to customer-specific requirements. All the operating equipment and tools needed for production – particularly high capacity punching dies – are made in house. The latest technology in the production area has provided Patterer GmbH with a loyal clientele and thus secure jobs up to now.

To fulfill the increasing needs of the customers in Southeast Asia Region Mr. Patterer has decided to establish an affiliated company in Thailand, namely Patterer Technical Parts Co., Ltd. (PTP) on 10.02.2006 with its registered office at 7/238 Moo 6, T. Mapyangporn, A. Pluakdaeng, Rayong 21140. Patterer Technical Parts Co., Ltd. engages in the manufacturing of precision parts for electronics and electric as well as automotive industries.

Our Group is characterized by flexibility, most advanced equipment as well as qualified employees, which assure a perfect guaranty for the conversion of the demand specifications. This ranges from the provision of tools and operating materials to the series production.

www.patterer-thailand.com
info@patterer-thailand.com

Management

Chairman of the Group:
Mrs. Anna Patterer

Managing Directors:
Mr. Markus Egger
(Patterer GmbH)

Mr. Lim Hock Chuan
(Patterer Technical Parts Co., Ltd.)

Patterer Group (Cont.)

Services:

- Planning, construction and development of stamping, bending and follow-on composite tools
- Tool construction for stamping, bending and follow-on composite tools
- Production of precision stamping, bending, in-die tapping, in-die riveting and in-die welding parts
- Production and assembly of composite plastic parts (manually and fully automatically)
- Aid for our customers through construction phase for hand sample, soft tool and construction phase for tool series for the test of pilot series

Machineries and Equipment:

PATTERER TECHNICAL PARTS CO., LTD.:

"Charmilles" Wire Eroding Machine
 "Charmilles" EDM Machine
 "Agie" Super Drill Machine
 "Okamoto" Surface Grinding ACC-450V
 "Okamoto" Surface Grinding ACC-350II
 "Okamoto" Precision Surface Grinding 63ST
 "Yamada Dobby" NXT-80XL
 "Yamada Dobby" NXT-50XL
 "Bruderer" High Speed Blanking Press BSTA-80HL
 "Bruderer" High Speed Blanking Press BSTA-50HL (2 Units)
 "Bruderer" High Speed Blanking Press BSTA-40HL
 "Bruderer" High Speed Blanking Press BSTA-25HL
 "Bruderer" High Speed Blanking Press BSTA-25
 "Bihler" Multi-slide Forming Machine RM30E
 "Bihler" Multi-slide Forming Machine RM30 (2 Units)
 "Bihler" Multi-slide Forming Machine RM35 (2 Units)
 "Arburg" 370U 500-170 Injection Moulding
 "Teca Print" TPE 150 Pad Printing
 "Axxel" Fully Automatic Hydrocarbon Vacuum Cleaning
 "ACTIVE" Machine Model IIDS-L221-E

PATTERER GMBH

"Agie" Wire Eroding Machine (2 Units)
 "Agie" Vertical Spark Eroding Machine
 "Agema" Starting Hole Drilling Machine
 "DMC" CNC milling m/c DMC 815
 "Jung" Surface Grinding Machine (4 Units)
 "Weiler" Turning Machine
 "Bihler" GRM 80
 "Bihler" MC 42 (5 Units)
 "Bihler" RM 35
 "Bihler" RM 40
 "Patterer" UMP (4 Units)
 "Buch" (2 Units)
 "Bruderer" 20to -> 110to (6 Units)
 "UP10" (2 Units)
 "Arburg" All Rounder 370U 270S (2 Units)

Patterer Group (Cont.)

MAIN PRODUCTS:

Precision Parts for the electronics, communications, and appliance industries.

MATERIALS USED:

BRASS STRIP:

C2600, C2680, CuZn37, CuZn15, CuZn36 Tin plated, CuZn5 Tin plated

PHOSPHOR BRONZE STRIP:

C5210, C5191, CuSn6, CuSn8, CuSn6 Hot Dip Tinned

STAINLESS STEEL STRIP:

1.4310, SUS-301, SUS-304, SUS-430

ANODIZED ALUMINIUM STRIP:

Miro-2 (4200 GP), Miro-2 Silver (4270 AG),
Miro-4 (4400 GP), Sumitomo A370-H18

STEEL STRIP:

C35, C60, SPCC, SPCD, DC03-pre copper
plated, Nicor NT3D DC01

SPECIAL STRIP:

STOL194, M400-50A, Imphy-Bimetal AS,
CuNi2Be, Ni 99,2

CONTACT WELDING AND RIVETING:

AgNi90/10, AgNi85/15, Ag rivets, AgCu rivet

PLASTIC RESIN:

PBT, LCP, PA



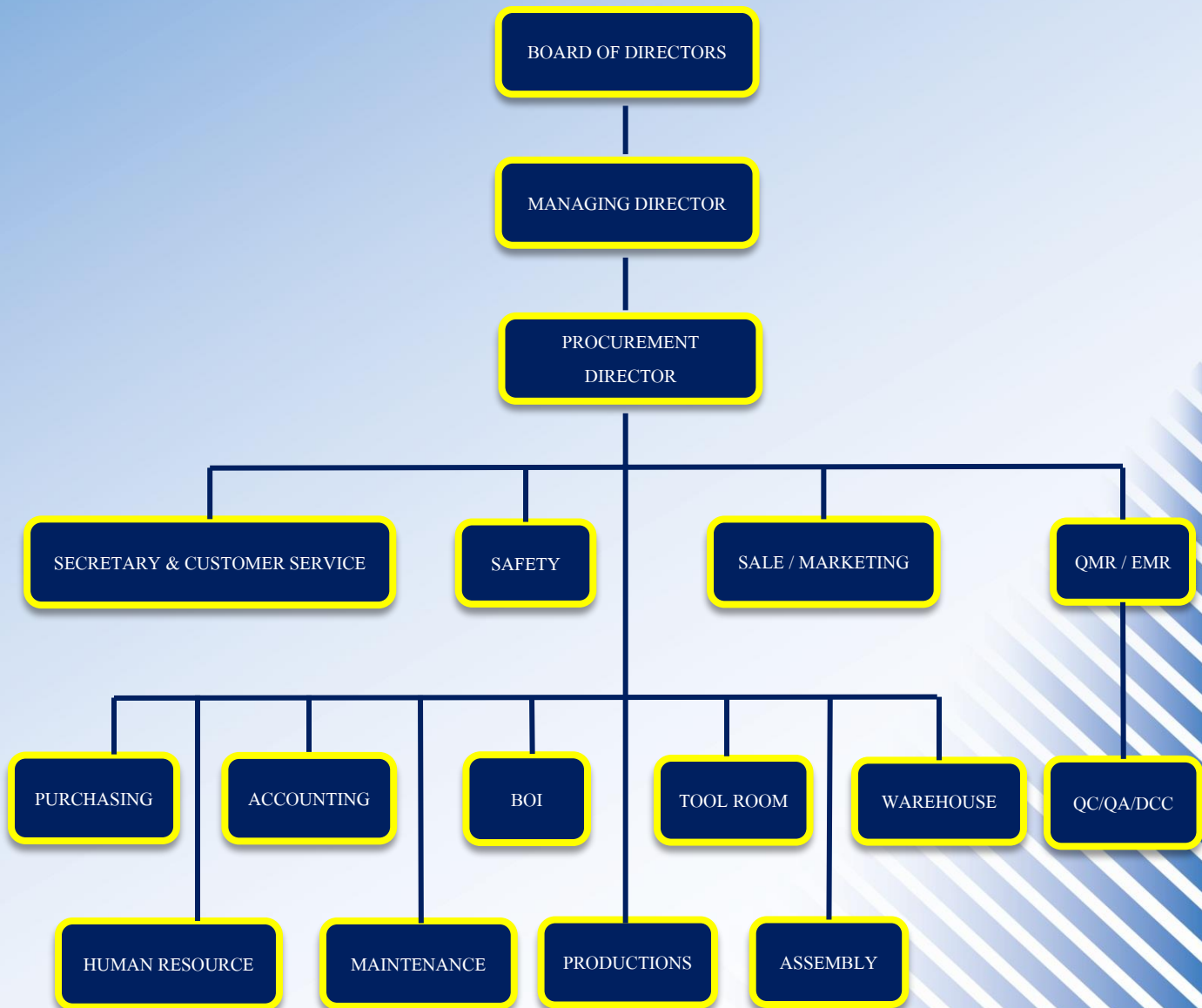
Factory Size

Land area : 3,795 sq.m.

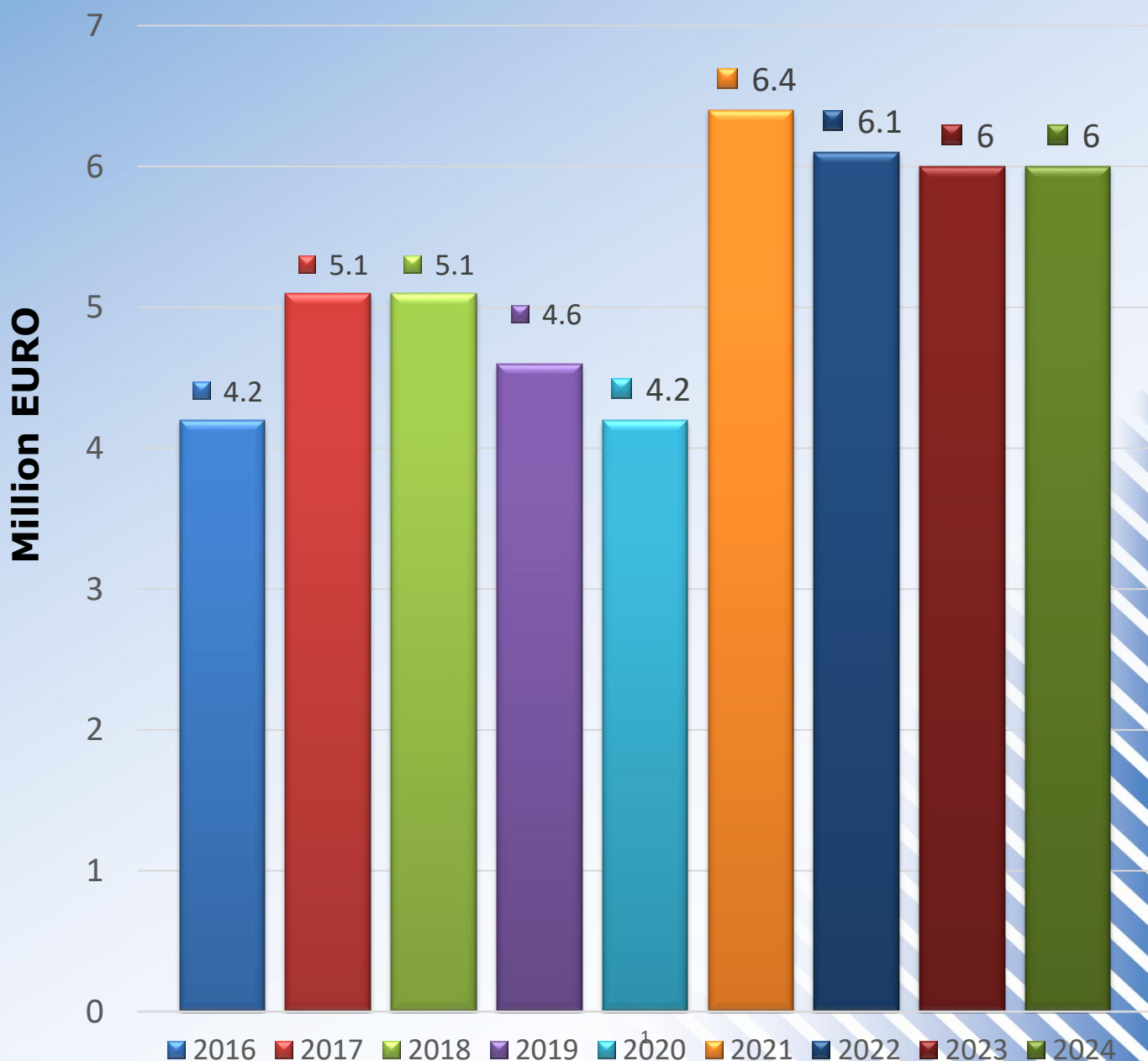
Usable area: 1,610 sq.m.



Organization chart PTP



Turnover of Patterer Thailand



Our Customers

BLUECHIPS
ELECTRONIC PRODUCT DESIGN & MANUFACTURING SERVICES

YASKAWA

Schneider
 **Electric**

ZIEHL-ABEGG 

FDK

JUKEN

blicino

PCE



Telemecanique
Sensors

www.patterer-thailand.com
info@patterer-thailand.com

Our Address

Amata City Industrial Estate
7/238 Moo 6, T. Mapyangporn,
A. Pluakdaeng, Rayong 21140

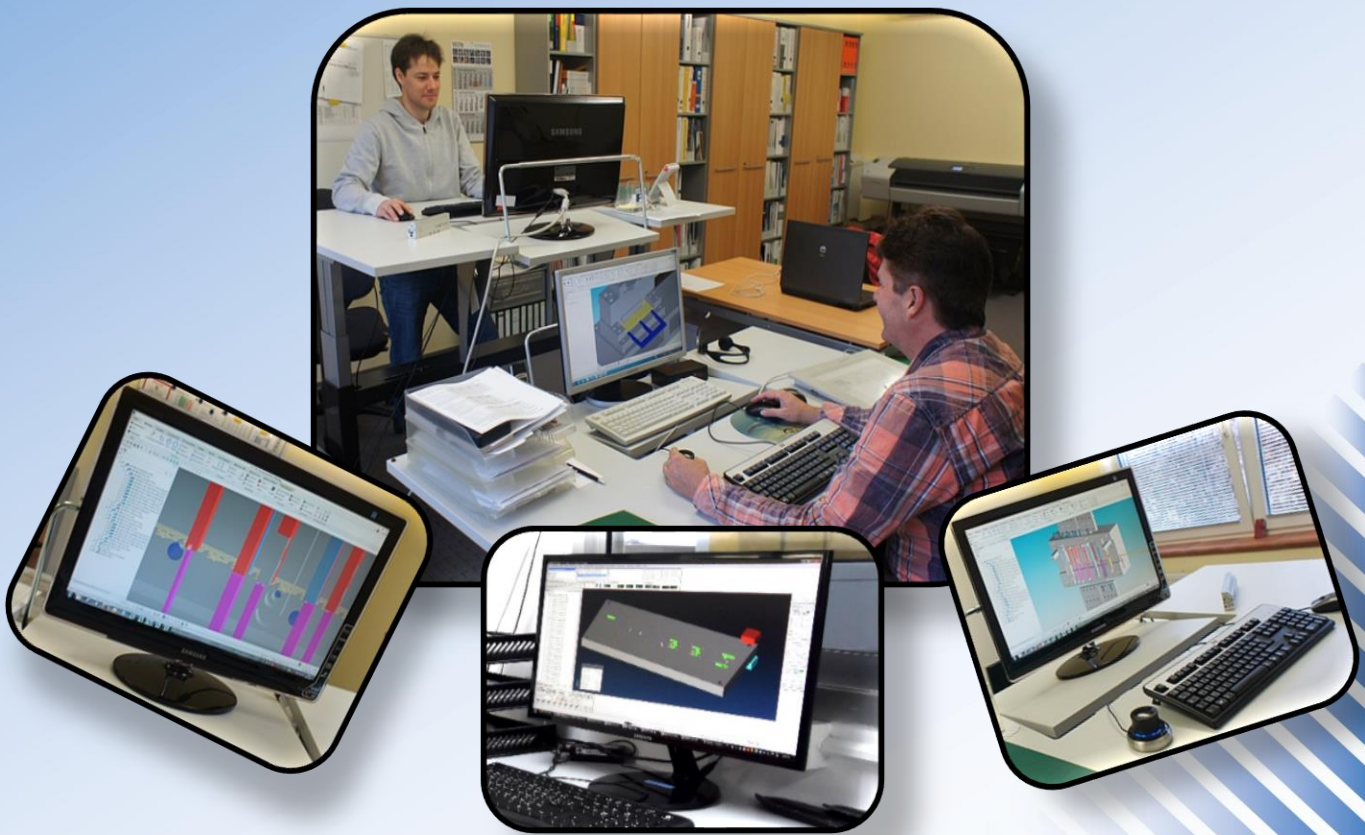
Tel: +66 (0) 38 650 480-2
Fax: + 66 (0) 38 650 484

Tax ID. No: 0105549020172

Technology

- ✓ 2D and 3D Design
- ✓ Tool room Department
- ✓ Stamping Department
 - Welding Technology
 - Riveting Technology
 - Tapping Technology
- ✓ Moulding Department
- ✓ Assembling Department
- ✓ Part Degreasing

2D and 3D Design



Our experienced development team has extensive specialized knowledge and consulting expertise. Supported by the latest CAD/CAM systems, we construct customer-specific stamping, bending, and assembly tools, as well as fully autonomous production lines using both 2D and 3D systems. This allows us to efficiently produce plastic, metal, and composite products.

Tool Room



With an extensive range of the most up-to-date machineries and sophisticated equipment we manufacture high precision progressive dies and multi-forming tools.

Our tooling is engineered and built to provide top quality components, meets demanding tolerances, and is constructed of tool grade steel for repeatable performance and longevity.

In-house capabilities allow us to control every aspect of the tool build including fabrication and maintenance to ensure quality for the lifetime of the tool.

GF Agie Charmilles Wire Cut Machine Model FI 240 ccS
GF Agie Charmilles EDM Model SP1
Agie Superdrill Machine Model Agiedrill
Okamoto Surface Grinding Machine Model PFG-350DX
Okamoto Surface Grinding Machine Model ACC 450V
Okamoto Precision Surface Grinding Machine Model 63ST
Deckel Maho Milling Machine Model FPI-2102
Le-Bond Makino Lathe Machine



Production - Stamping Department



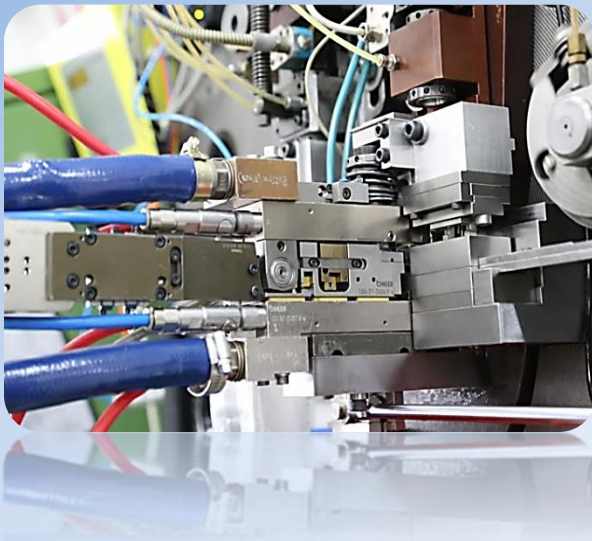
From quantities of 20,000 to millions, the high-speed presses and multi-slide machines at Patterer Technical Parts Co., Ltd. Thailand are ready to produce precision metal stampings of any shape out of virtually any raw material.

We offer complete manufacturing solutions with integrated contact welding processes, In-Die Tapping or In-Die riveting Modules for progressive dies or Bihler Multi-Forming Machines.

Bruderer High Speed Blanking Press Model BSTA-80HL
Bruderer High Speed Blanking Press Model BSTA-50HL (2x)
Bruderer High Speed Blanking Press Model BSTA-40
Bruderer High Speed Blanking Press Model BSTA-25HL
Bruderer High Speed Blanking Press Model BSTA-25
Bihler Multi-Forming Machine Model RM 30E
Bihler Multi-Forming Machine Model RM 30 (2x)
Bihler Multi-Forming Machine Model RM 35 (2x)
Yamada Dobby NXT-80XL
Yamada Dobby NXT-50XL

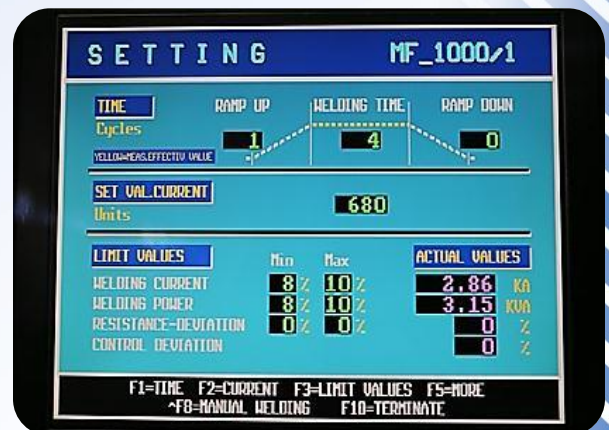


Production - Welding Technology

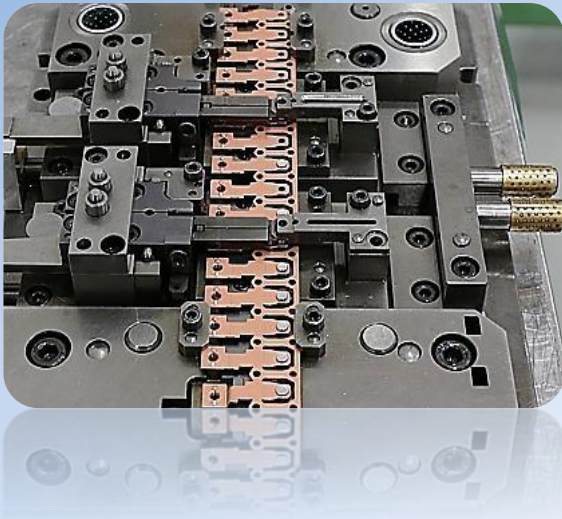


Patterer Technical Parts Co., Ltd. offers complete manufacturing solutions with integrated welding processes for progressive dies and Bihler Multi-Forming Machines.

Intelligent welding controls used in conjunction with highly-flexible peripherals for greatest process safety and maximum productivity ensure that these every changing demands are met.

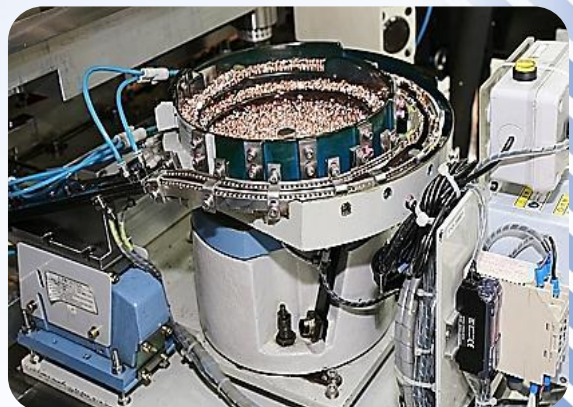


Production - Riveting Technology



Patterer Technical Parts Co., Ltd. developed a complete new concept for In-die riveting! Our tool design combine the stamping/bending module and one riveting module, in any progressive die. With our break through concept we are able to assembly up to 300 rivets per minute!

High-Speed Riveting



Production - Tapping Technology



Patterer Technical Parts Co., Ltd. using Pronic & Intercom tapping units for all in-die tapping demands. With a production speed of up to 120 RPM, complete production lines are possible, in conjunction with in-die welding or riveting!

Intercom Servo Tapping Unit SL.2005.1



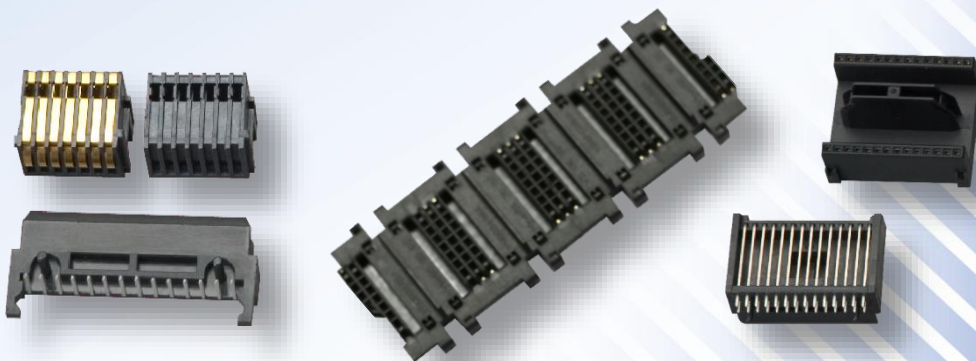
Production - Injection Moulding Department



We produce the required plastic-compound parts on our own Arburg Arburg 370U 500-170 injection moulding machine.

The used plastics resin for the automotive and electrical industry are e.g. PBT, LCP and PA.

SELOGICA control system (modular, graphic multi-processor system). Swiveling monitor unit located close to the mold. Interface for printer with documentation program for quality evaluation. Quality assurance program with fault evaluation and monitoring chart are the highlights of this machine!



Production - Assembling Department



Patterer Technical Parts Co. Ltd. produces high quality stamping parts, contact elements, compound and assembly parts for customers in the electronics, automobile, communication and appliance industries.

Our Assembly Line is committed to excellence. We provide quality products and services that meet or exceed both the initial and continuing needs and expectations of our customers.

Production – Degreasing Department



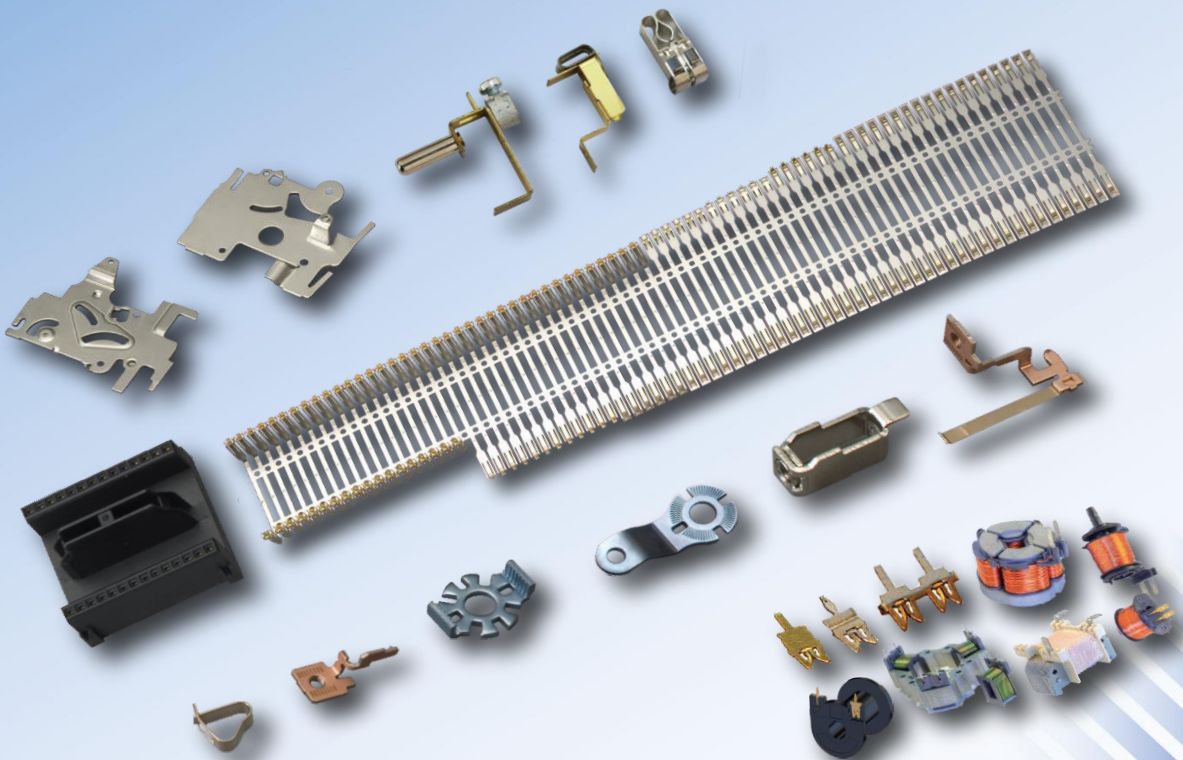
Environmental Friendly Industrial Cleaning System with all-in-one system.

High cleaning performance by ultrasonic along with vacuum technology and low running cost by built-in recycle unit.

Automatic Hydrocarbon Part Washing Machine from Axxel



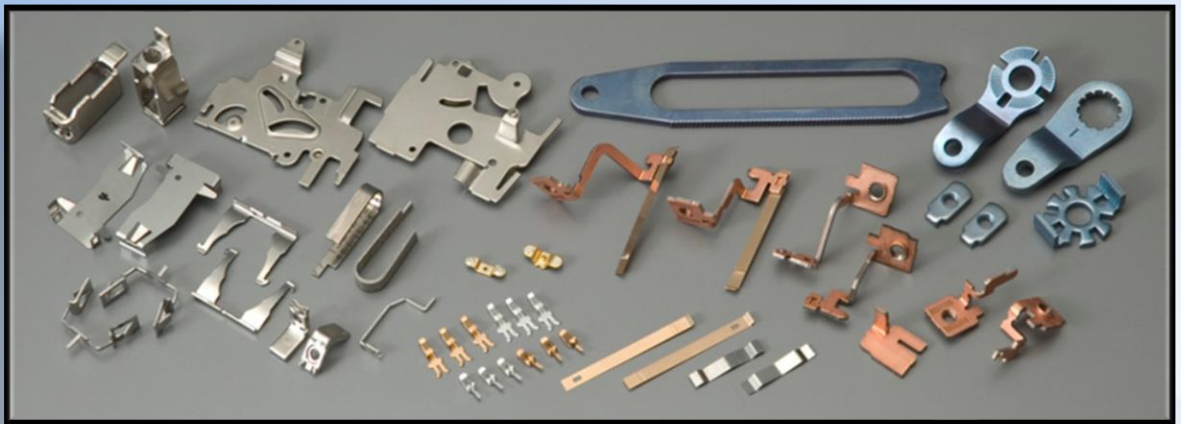
Products



- ✓ Electronic
- ✓ Electrical
- ✓ IDC Contact
- ✓ Hardware

Product Assortments (Cont.)

Electronic Parts / In-Die Welding / In-Die Tapping / In-Die Riveting Parts

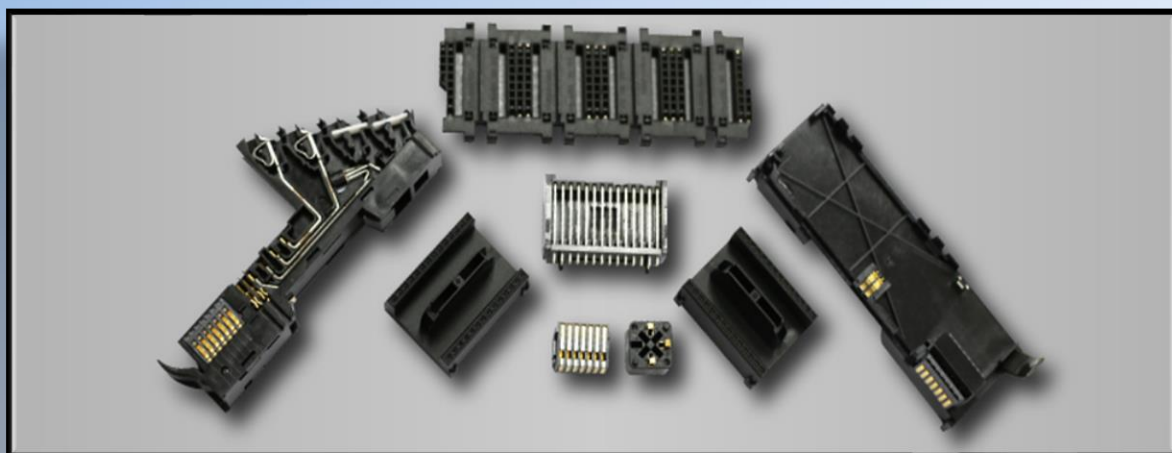


Power Socket PCE



Product Assortments (Cont.)

SLIO I/O System / Connector Parts



IDC Connectors



Product Assortments (Cont.)

Miscellaneous Stamping Parts

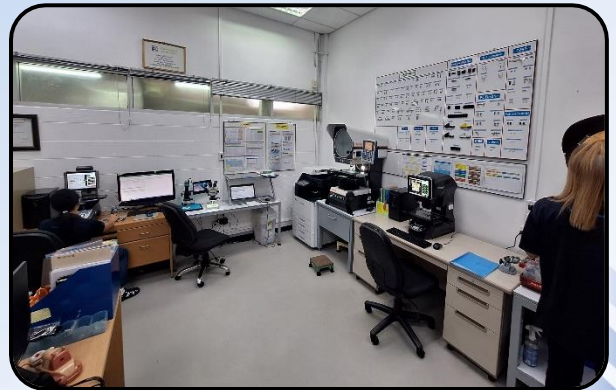


Quality Management

We are certified according to
ISO 9001:2015

The quality management is practiced uniformly in accordance with the standards of DIN ISO 9001.

Quality control with Mitutoyo computer assisted profile projector, Keyence IM 6125 , Keyence LM 1100 measurement system, Dual Microscope, measuring microscope, product specific measurement fixture. Testing and control of process capability.



To Exceed Customers Expectations Through:

- * Quality Precision Products
- * On Time Delivery
- * Excellent Customer Service

Quality Management (Cont.)

Quality Policy

WE FOCUS AND ENHANCE ON THE VALUE OF CUSTOMER SATISFACTION BY COMMITTING TO SUPPLY:

- GOOD QUALITY PRODUCTS
- ON TIME DELIVERY
- SATISFACTORY CUSTOMER SERVICE

OUR MANAGEMENT HAS COMMITTED THAT QUALITY MANAGEMENT SYSTEM BASED ON THE REQUIREMENT OF ISO 9001:2015 IS ENSURED AND COMPLIED WITH AND ALSO COMMITTED TO ALL REQUIREMENTS SET BY CUSTOMERS AS WELL AS APPLICABLE LEGAL REGULATIONS AND INSTITUTIONAL CODES.

THUS QUALITY, RELIABILITY AND SUITABILITY OF OUR PRODUCTS AND SERVICES ARE THE RESPONSIBILITY OF ALL EMPLOYEES WITH CONTINUALLY IMPROVEMENT PHILOSOPHY.

Mr. Lim Hock Chuan

Quality Management (Cont.)

นโยบายคุณภาพ

ความพึงพอใจของลูกค้าเป็นสิ่งสำคัญ ซึ่งบริษัทฯ ให้ความสำคัญและมุ่งมั่นปรับปรุงให้ดียิ่งขึ้นตลอดเวลา เพื่อให้ลูกค้ามีความมั่นใจใน

- ผลิตภัณฑ์ที่มีคุณภาพ
- การจัดส่งที่ตรงเวลา
- การบริการที่ลูกค้าพึงพอใจ

ฝ่ายบริหารของบริษัทฯ ขอให้คำมั่นสัญญาว่า ระบบการบริหารจัดการคุณภาพบนพื้นฐานของข้อกำหนด ISO 9001:2015 นั้น ได้รับการดำเนินการและปฏิบัติตามข้อกำหนดที่ลูกค้าต้องการ รวมทั้งตามกฎระเบียบและข้อบังคับที่เกี่ยวข้องกับกฎหมายและที่สอดคล้อง

กฎหมาย ที่ใช้บังคับอยู่ทุกประการ

ดังนั้น คุณภาพ ความเชื่อถือได้ และความเหมาะสมของสินค้าและบริการของบริษัทฯ จึงเป็นหน้าที่ความรับผิดชอบของพนักงานทุกคนที่มีความมุ่งมั่นปรับปรุงให้ดียิ่งขึ้นอย่างต่อเนื่องตลอดไป

Quality Management System

ISO 9001:2015 Certification

bsi.  

Certificate of Registration

QUALITY MANAGEMENT SYSTEM - ISO 9001:2015

This is to certify that: **PATTERER TECHNICAL PARTS CO., LTD.**
7/238 MOO 6, T. MABYANGPORN,
A. PLUAKDAENG,
RAYONG
21140
Thailand

Holds Certificate Number: **FM 687037**

and operates a Quality Management System which complies with the requirements of ISO 9001:2015 for the following scope:

The manufacture of metal stamping, assembly and injection molding parts.

For and on behalf of BSI: 
Michael Lam - Managing Director Assurance, APAC

Original Registration Date: 2018-03-19 Effective Date: 2024-03-19
Latest Revision Date: 2024-01-29 Expiry Date: 2027-03-18

Page: 1 of 1

...making excellence a habit.™

This certificate was issued electronically and remains the property of BSI and is bound by the conditions of contract.
An electronic certificate can be authenticated [online](https://www.bsi-global.com/ClientDirectory).
Printed copies can be validated at www.bsi-global.com/ClientDirectory or telephone + (662) 294889 92.
Further clarifications regarding the scope of this certificate and the applicability of ISO 9001:2015 requirements may be obtained by consulting the organization.
This certificate is valid only if provided original copies are in complete set.

Information and Contact: BSI, Kitemark Court, Davy Avenue, Knowlhill, Milton Keynes MK3 8PP. Tel: +44 345 080 9000.
BSI Assurance UK Limited, registered in England under number 7805321 at 389 Chiswick High Road, London W4 4AL, UK.
A Member of the BSI Group of Companies.

Environmental Management System

ISO 14001:2015 Certification

bsi.  

Certificate of Registration

ENVIRONMENTAL MANAGEMENT SYSTEM - ISO 14001:2015

This is to certify that:

PATTERER TECHNICAL PARTS CO., LTD.
7/238 MOO 6, T. MABYANGPORN,
A. PLUAKDAENG,
RAYONG
21140
Thailand

Holds Certificate Number: **EMS 814328**

and operates an Environmental Management System which complies with the requirements of ISO 14001:2015 for the following scope:

The manufacture of metal stamping, assembly and injection molding parts.

For and on behalf of BSI:


Michael Lam, Senior Vice President, APAC Assurance

Original Registration Date: 2025-02-22
Latest Revision Date: 2025-02-22

Effective Date: 2025-02-22
Expiry Date: 2028-02-21

Page: 1 of 1

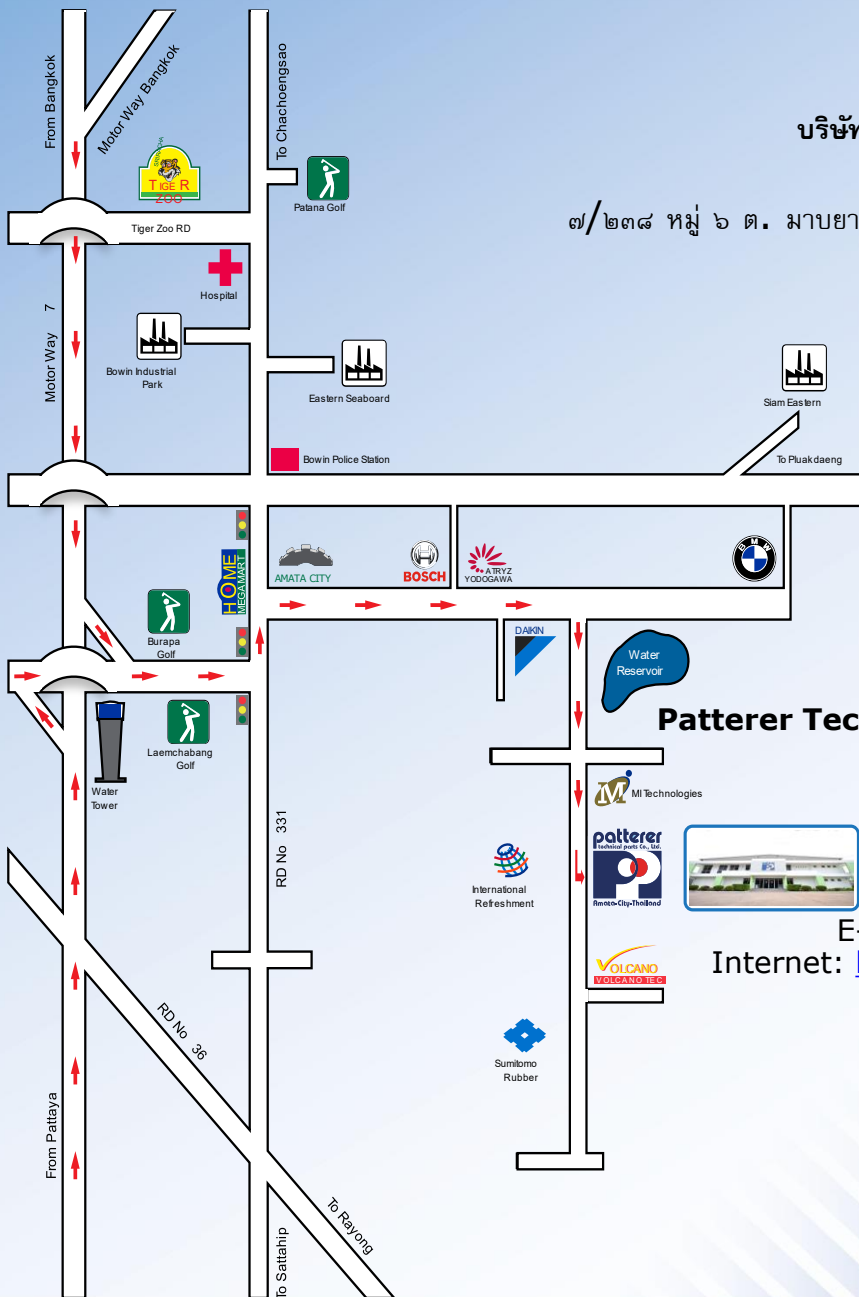
 

...making excellence a habit.™

This certificate was issued electronically and remains the property of BSI and is bound by the conditions of contract.
An electronic certificate can be authenticated [online](https://www.bsi-global.com/ClientDirectory).
Printed copies can be validated at www.bsi-global.com/ClientDirectory or telephone +66(2) 2944889-92.
Further clarifications regarding the scope of this certificate and the applicability of ISO 14001:2015 requirements may be obtained by consulting the organization.
This certificate is valid only if provided original copies are in complete set.

Information and Contact: BSI, Kilnmark Court, Davy Avenue, Kidlington, Milton Keynes MK5 8PP, UK. Tel: +44 345 080 9000
BSI Assurance UK Limited, registered in England under number 7805321 at 389 Chiswick High Road, London W4 4AL, UK.
A Member of the BSI Group of Companies.

Company Location



บริษัท แพทเทอเรีย เทคนิคคอล พาร์ท จำกัด

นิคมอุตสาหกรรมอมตะซิตี้

๗/๒๓๘ หมู่ ๖ ต. มابียงพร อ. ปลวกแดง จังหวัดระยอง ๒๑๑๔๐

โทรฯ + ๖๖ (๐) ๓๘ ๖๕๐ ๔๘๐-๒

โทรสาร + ๖๖ (๐) -๓๘ ๖๕๐ ๔๘๔

เลขประจำตัวผู้เสียภาษีอากร

๐๑ ๐๕๕ ๔๙๐ ๒๐๑๗๒

Patterer Technical Parts Company Limited,

Amata City Industrial Estate,

7/238 Moo 6, T. Mabyangporn,

A. Pluakdaeng, Rayong 21140

Tel.: +66 (0) 38 650 480-2,

Fax.: + 66 (0) 38 650 484

E-mail: info@patterer-thailand.com

Internet: <http://www.patterer-thailand.com>

Tax ID. No. 0105549020172

PTP Team



We thank you for your kind support!